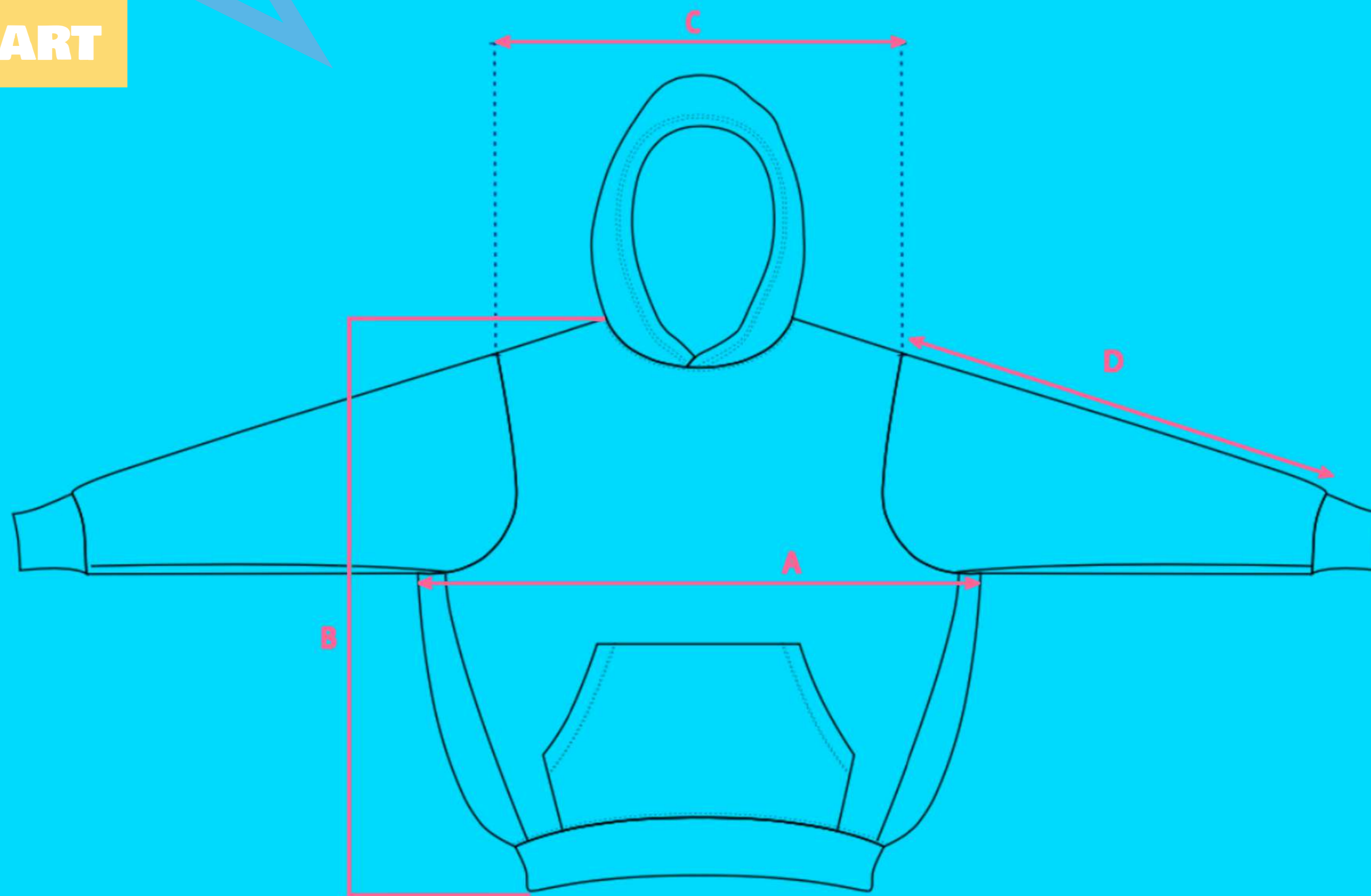


# ADULT HOODIE

MR BEAST

## SIZING CHART



### INCHES

REF	MEASUREMENTS	S	M	L	XL	2X	3X
A	<b>Front Chest:</b> The width at the chest, measure from underarm point to underarm point across the front.	24.9	25.3	25.3	26.2	26.7	27.3
B	<b>Front Length:</b> The vertical length of the garment, starting from the highest shoulder point, to the bottom of the hem.	28.9	29.3	29.7	30.2	30.7	31.3
C	<b>Across Shoulder:</b> The distance between the shoulder seams measured straight across the front.	23.6	24.0	24.4	24.9	25.4	25.9
D	<b>Sleeve length:</b> The total length from the shoulder seam to the start of the cuff.	24.1	24.3	24.6	24.9	25.2	25.6

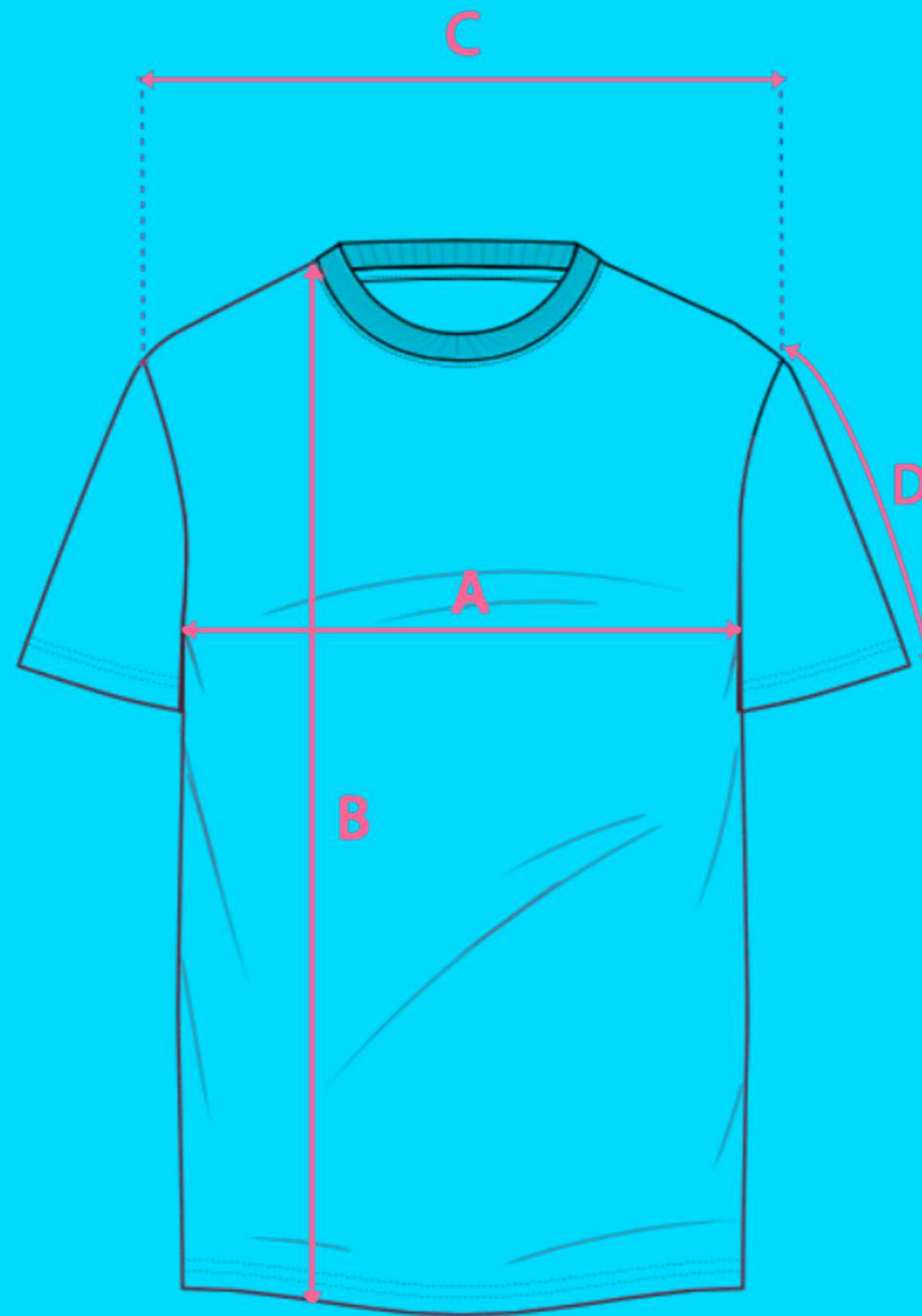
### CENTIMETERS

REF	MEASUREMENTS	S	M	L	XL	2X	3X
A	<b>Front Chest:</b> The width at the chest, measure from underarm point to underarm point across the front.	63.25	64.25	64.25	66.5	67.75	69.25
B	<b>Front Length:</b> The vertical length of the garment, starting from the highest shoulder point, to the bottom of the hem.	73.5	74.5	75.5	76.7	77.9	79.4
C	<b>Across Shoulder:</b> The distance between the shoulder seams measured straight across the front.	60	61	62	63.2	64.4	65.9
D	<b>Sleeve length:</b> The total length from the shoulder seam to the start of the cuff.	61.1	61.8	62.5	63.2	63.9	64.9

# ADULT TEE

MR BEAST

## SIZING CHART



### INCHES

REF	MEASUREMENTS	S	M	L	XL	2X	3X
A	<b>Front Chest:</b> The width at the chest, measure from underarm point to underarm point across the front.	21.3	22.2	23.2	24.5	25.8	27.1
B	<b>Front Length:</b> The vertical length of the garment, starting from the highest shoulder point, to the bottom of the hem.	28.4	29.3	30.1	31	31.9	32.7
C	<b>Across Shoulder:</b> The distance between the shoulder seams measured straight across the front.	21	21.5	22	22.6	23.4	24.2
D	<b>Sleeve length:</b> The total length from the shoulder seam to the start of the cuff.	8.8	9.1	9.1	9.3	9.6	10

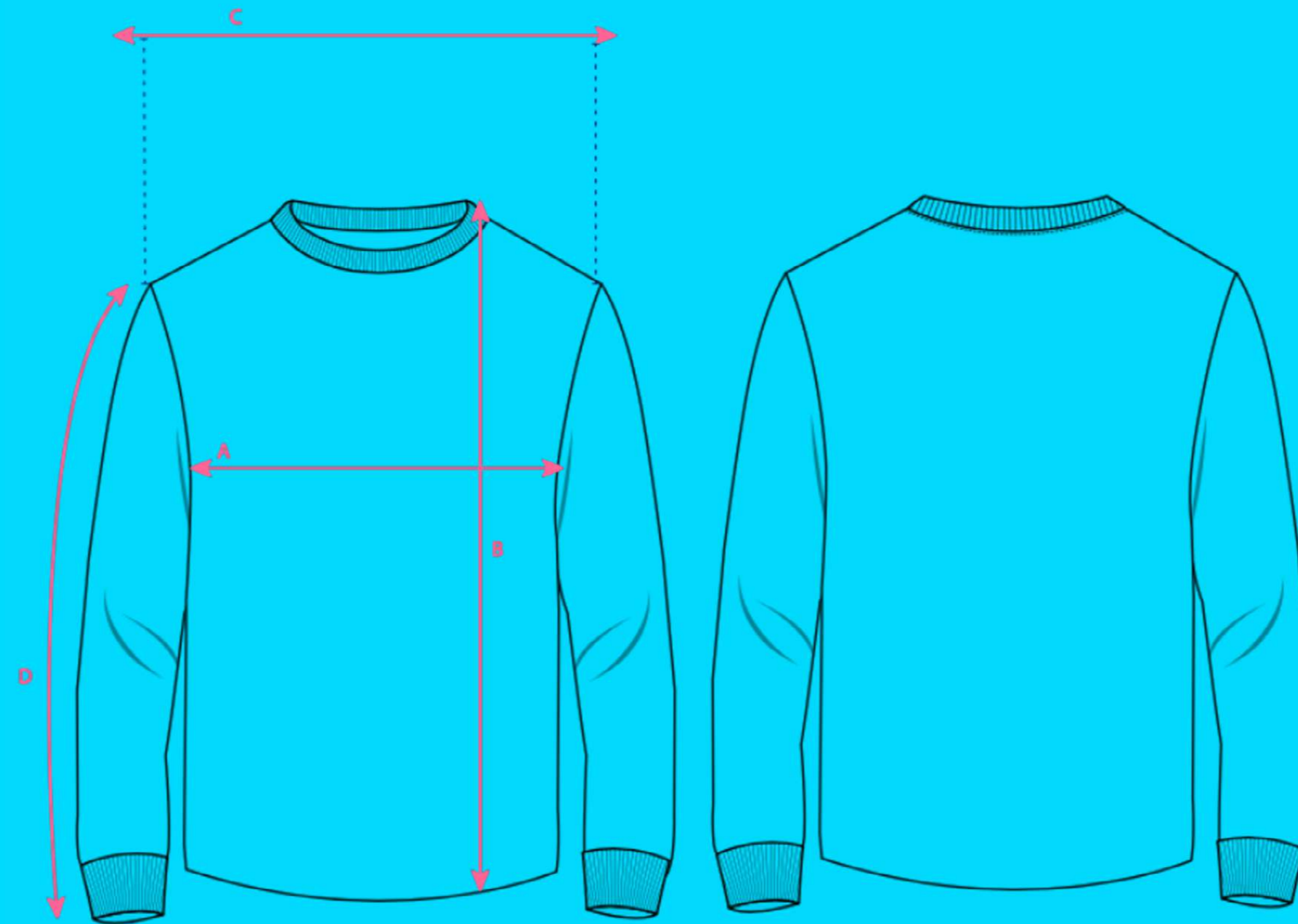
### CENTIMETERS

REF	MEASUREMENTS	S	M	L	XL	2X	3X
A	<b>Front Chest:</b> The width at the chest, measure from underarm point to underarm point across the front.	54	56.5	59	62.3	65.6	68.9
B	<b>Front Length:</b> The vertical length of the garment, starting from the highest shoulder point, to the bottom of the hem.	72.1	74.3	76.5	78.7	80.9	83.1
C	<b>Across Shoulder:</b> The distance between the shoulder seams measured straight across the front.	53.4	54.7	56	57.5	59.5	61.5
D	<b>Sleeve length:</b> The total length from the shoulder seam to the start of the cuff.	22.3	23	23	23.7	24.4	25.4

# ADULT LONG SLEEVE

MR BEAST

## SIZING CHART



### INCHES

REF	MEASUREMENTS	S	M	L	XL	2X	3X
A	<b>Front Chest:</b> The width at the chest, measure from underarm point to underarm point across the front.	21.3	22.2	23.2	24.5	25.8	27.1
B	<b>Front Length:</b> The vertical length of the garment, starting from the highest shoulder point, to the bottom of the hem.	27.4	28.3	29.1	30	30.9	31.7
C	<b>Across Shoulder:</b> The distance between the shoulder seams measured straight across the front.	20.2	20.7	21.3	21.9	22.6	23.4
D	<b>Sleeve length:</b> The total length from the shoulder seam to the start of the cuff.	25	25.2	25.2	25.5	25.7	26.1

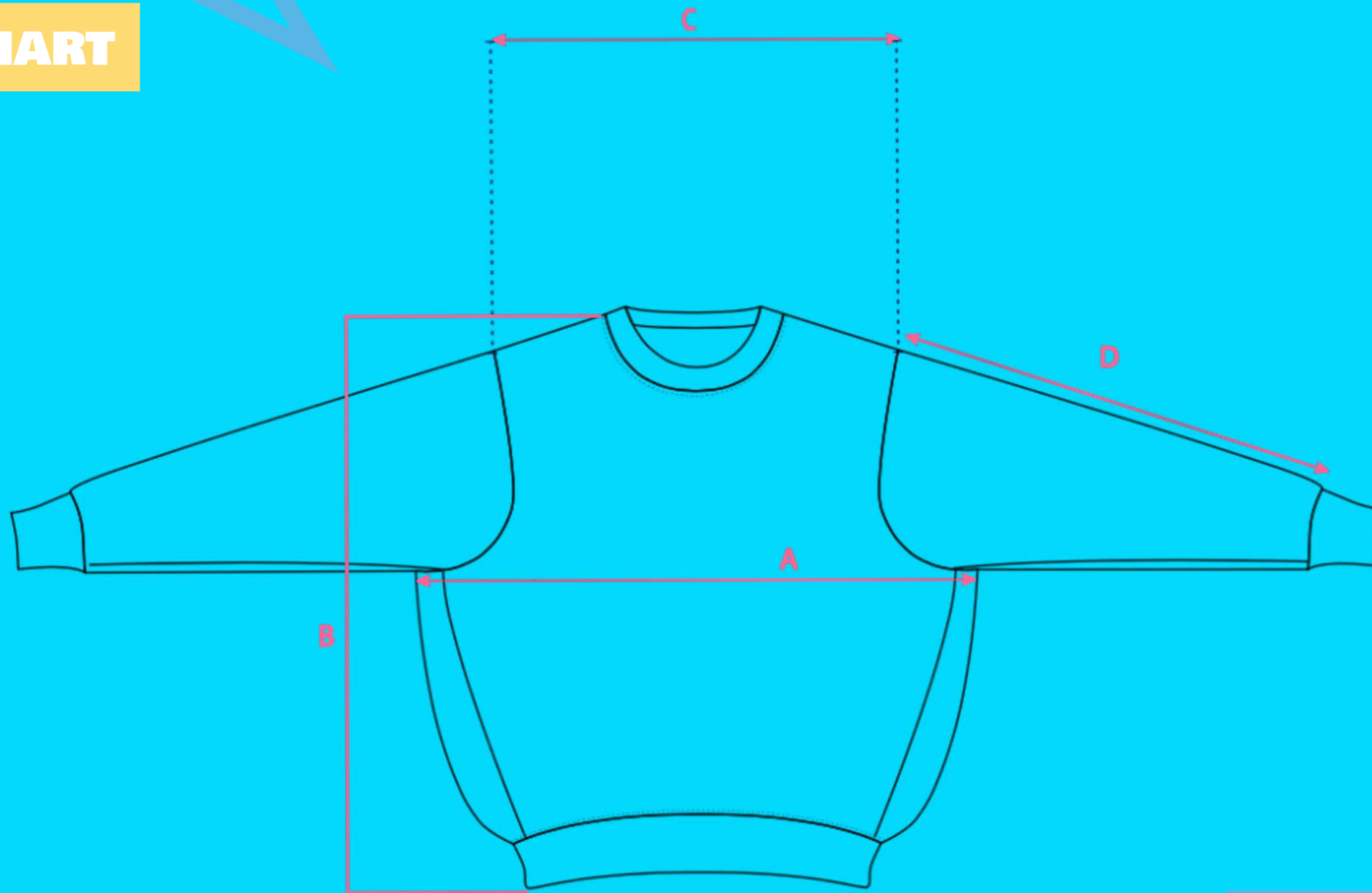
### CENTIMETERS

REF	MEASUREMENTS	S	M	L	XL	2X	3X
A	<b>Front Chest:</b> The width at the chest, measure from underarm point to underarm point across the front.	54	56.5	59	62.3	65.6	68.9
B	<b>Front Length:</b> The vertical length of the garment, starting from the highest shoulder point, to the bottom of the hem.	69.6	71.8	74	76.2	78.4	80.6
C	<b>Across Shoulder:</b> The distance between the shoulder seams measured straight across the front.	51.4	52.7	54	55.5	57.5	59.5
D	<b>Sleeve length:</b> The total length from the shoulder seam to the start of the cuff.	63.6	64	64	64.7	65.4	66.4

# ADULT CREW

MR BEAST

## SIZING CHART



### INCHES

REF	MEASUREMENTS	S	M	L	XL	2X	3X
A	<b>Front Chest:</b> The width at the chest, measure from underarm point to underarm point across the front.	25.6	26.4	27.2	28.1	29.1	30.3
B	<b>Front Length:</b> The vertical length of the garment, starting from the highest shoulder point, to the bottom of the hem.	27.6	28.3	29.1	30	30.9	31.7
C	<b>Across Shoulder:</b> The distance between the shoulder seams measured straight across the front.	24.4	25.2	26	27	28	29.1
D	<b>Sleeve length:</b> The total length from the shoulder seam to the start of the cuff.	21.5	21.9	22.2	22.6	23	23.5

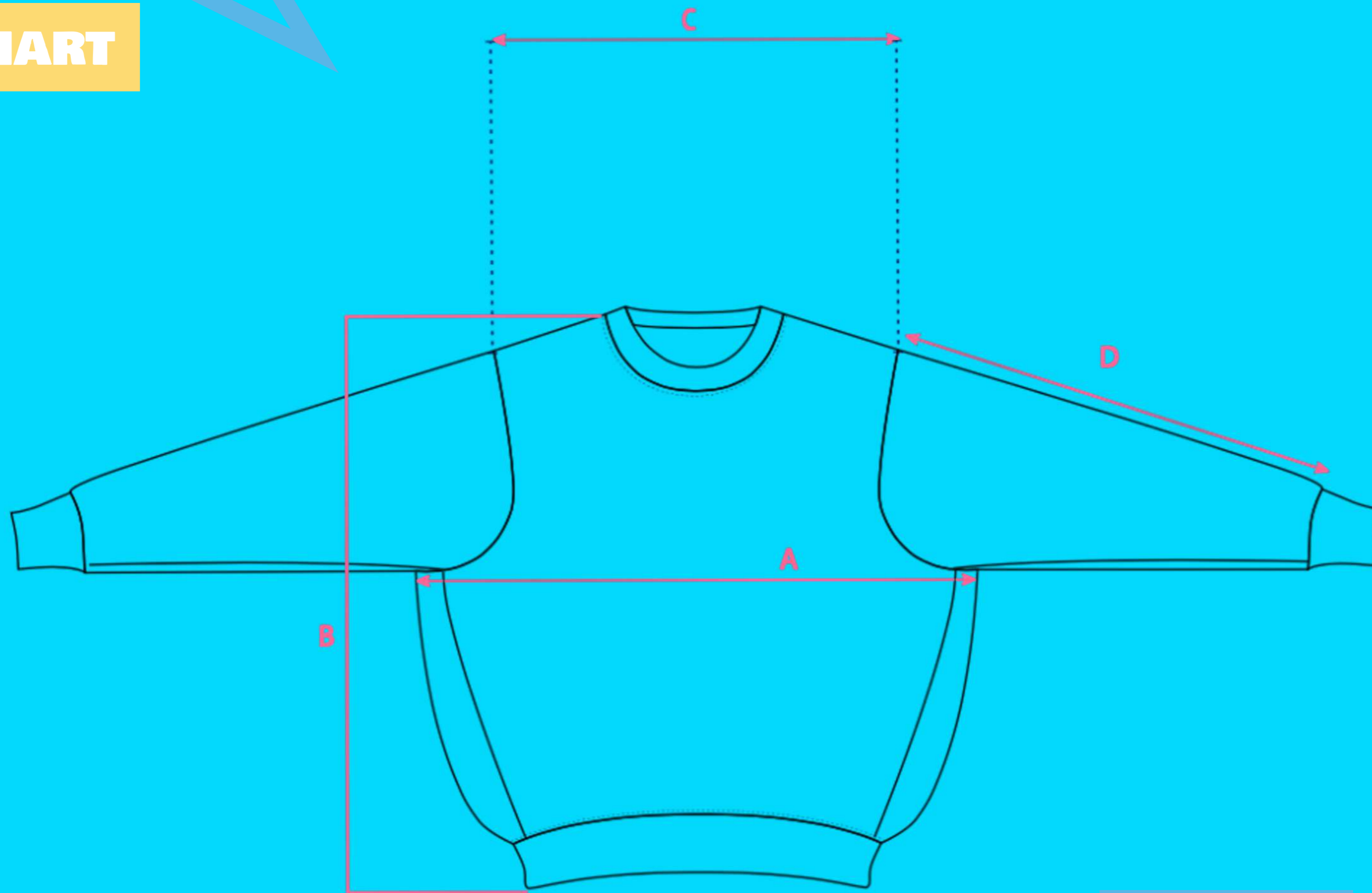
### CENTIMETERS

REF	MEASUREMENTS	S	M	L	XL	2X	3X
A	<b>Front Chest:</b> The width at the chest, measure from underarm point to underarm point across the front.	65	67	69	71.5	74	77
B	<b>Front Length:</b> The vertical length of the garment, starting from the highest shoulder point, to the bottom of the hem.	70	72	74	76.2	78.4	81
C	<b>Across Shoulder:</b> The distance between the shoulder seams measured straight across the front.	62	64	66	68.5	71	74
D	<b>Sleeve length:</b> The total length from the shoulder seam to the start of the cuff.	54.5	55.5	56.5	57.5	58.5	59.8

# CHILDREN'S CREW



## SIZING CHART



### INCHES

REF	MEASUREMENTS	10	12	14	16
A	<b>Front Chest:</b> The width at the chest, measure from underarm point to underarm point across the front.	18.3	18.9	19.5	20.1
B	<b>Front Length:</b> The vertical length of the garment, starting from the highest shoulder point, to the bottom of the hem.	23.6	34.2	25.6	25.8
C	<b>Across Shoulder:</b> The distance between the shoulder seams measured straight across the front.	20.1	20.5	20.9	21.3
D	<b>Sleeve length:</b> The total length from the shoulder seam to the start of the cuff.	18.7	19.3	19.9	20.5

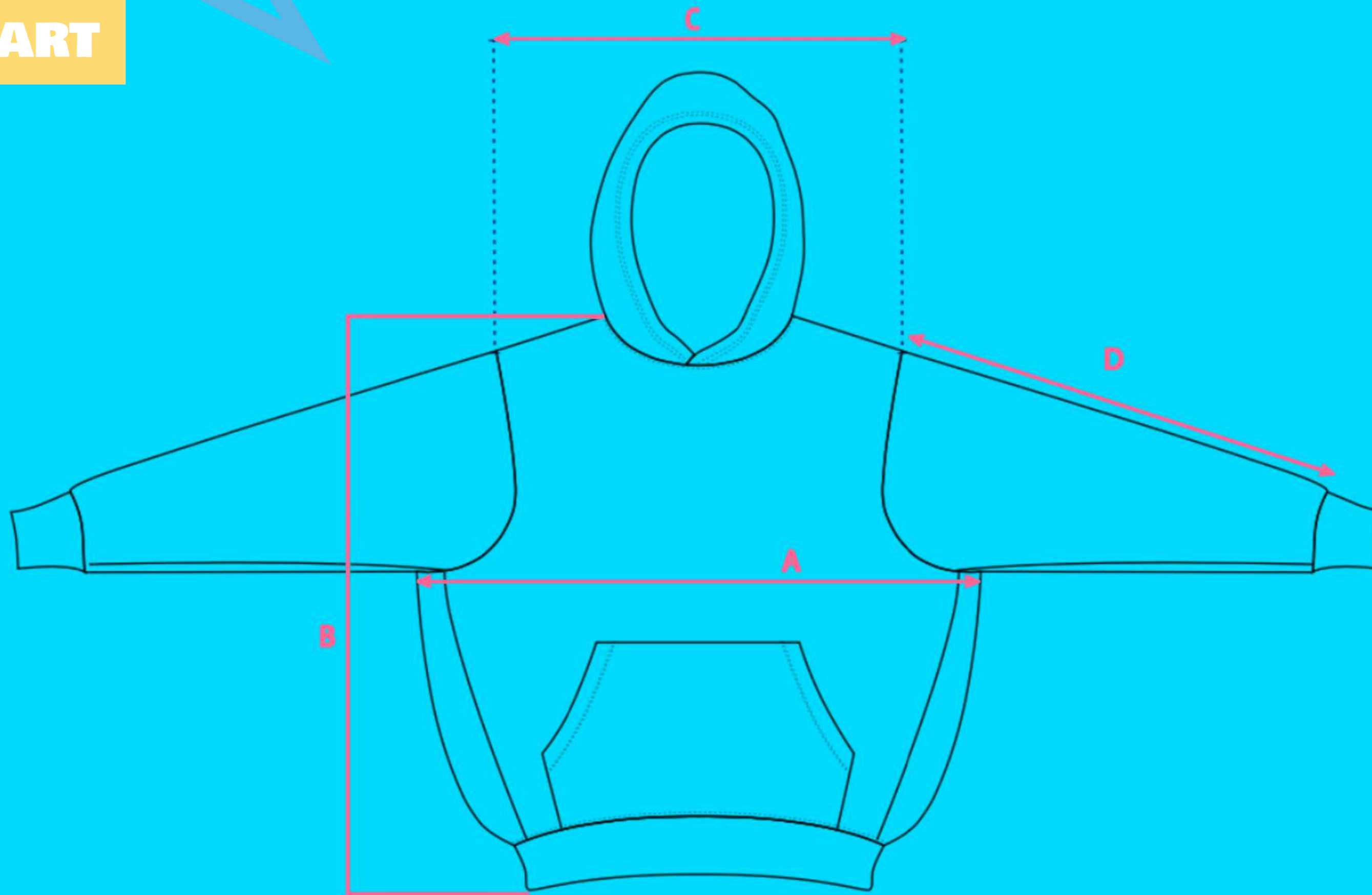
### CENTIMETERS

REF	MEASUREMENTS	10	12	14	16
A	<b>Front Chest:</b> The width at the chest, measure from underarm point to underarm point across the front.	46.5	48	49.5	51
B	<b>Front Length:</b> The vertical length of the garment, starting from the highest shoulder point, to the bottom of the hem.	60	61.5	65	65.5
C	<b>Across Shoulder:</b> The distance between the shoulder seams measured straight across the front.	51	52	53	54
D	<b>Sleeve length:</b> The total length from the shoulder seam to the start of the cuff.	47.5	49	50.5	52

# CHILDREN'S HOODIE



## SIZING CHART



### INCHES

REF	MEASUREMENTS	10	12	14	16
A	<b>Front Chest:</b> The width at the chest, measure from underarm point to underarm point across the front.	18.3	18.9	19.5	20.1
B	<b>Front Length:</b> The vertical length of the garment, starting from the highest shoulder point, to the bottom of the hem.	23.6	24.2	24.8	25.4
C	<b>Across Shoulder:</b> The distance between the shoulder seams measured straight across the front.	20.1	20.5	20.9	21.3
D	<b>Sleeve length:</b> The total length from the shoulder seam to the start of the cuff.	18.7	19.3	19.9	20.5

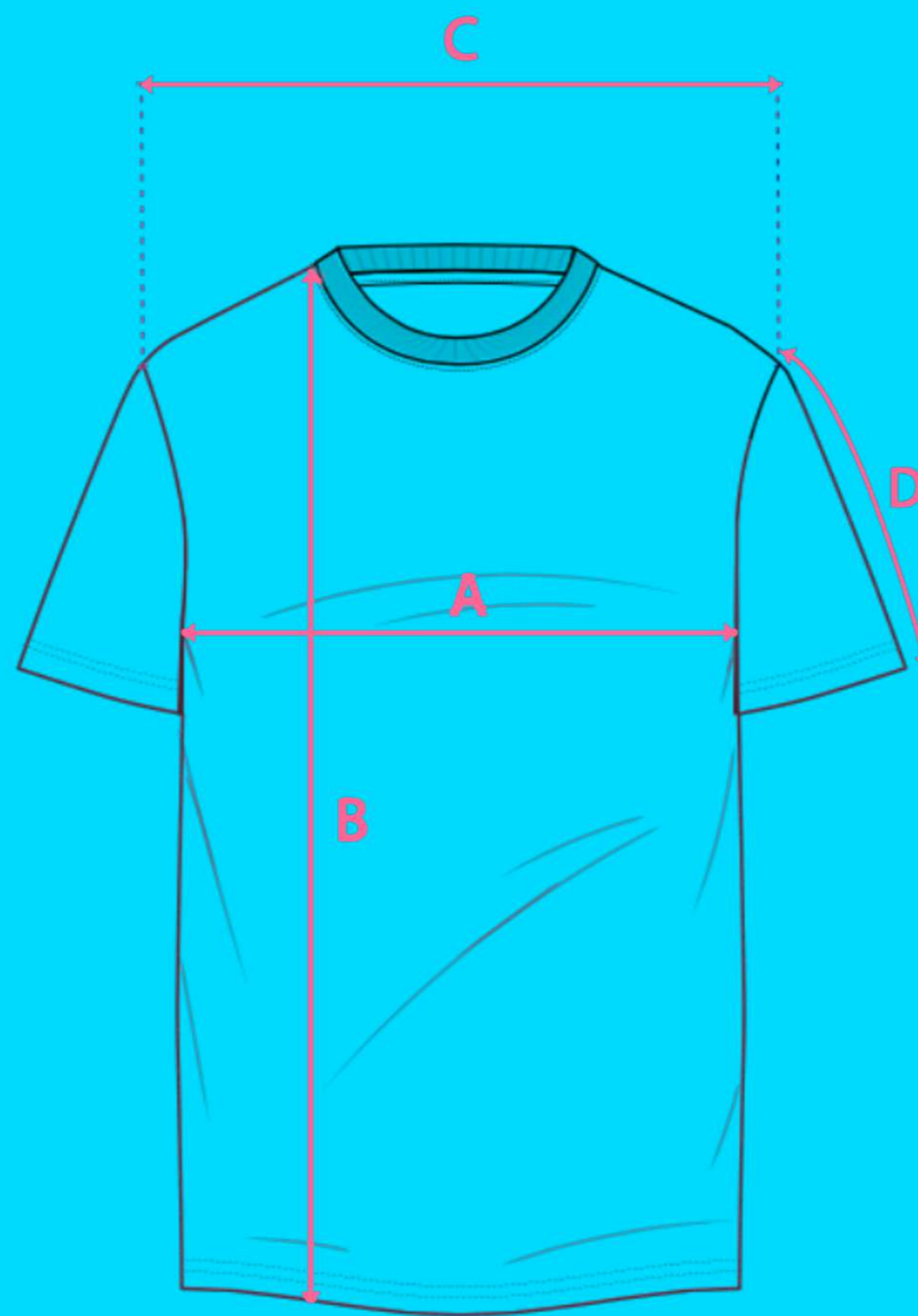
### CENTIMETERS

REF	MEASUREMENTS	10	12	14	16
A	<b>Front Chest:</b> The width at the chest, measure from underarm point to underarm point across the front.	46.5	48	49.5	51
B	<b>Front Length:</b> The vertical length of the garment, starting from the highest shoulder point, to the bottom of the hem.	60	61.5	63	64.5
C	<b>Across Shoulder:</b> The distance between the shoulder seams measured straight across the front.	51	52	53	54
D	<b>Sleeve length:</b> The total length from the shoulder seam to the start of the cuff.	47.5	49	50.5	52

# CHILDREN'S TEE

MR BEAST

## SIZING CHART



### INCHES

REF	MEASUREMENTS	10	12	14	16
A	<b>Front Chest:</b> The width at the chest, measure from underarm point to underarm point across the front.	16.5	17.7	18.9	20.1
B	<b>Front Length:</b> The vertical length of the garment, starting from the highest shoulder point, to the bottom of the hem.	23.6	25.2	26.4	28.7
C	<b>Across Shoulder:</b> The distance between the shoulder seams measured straight across the front.	13.4	14.2	15.4	16.5
D	<b>Sleeve length:</b> The total length from the shoulder seam to the start of the cuff.	6.3	6.7	7.1	7.5

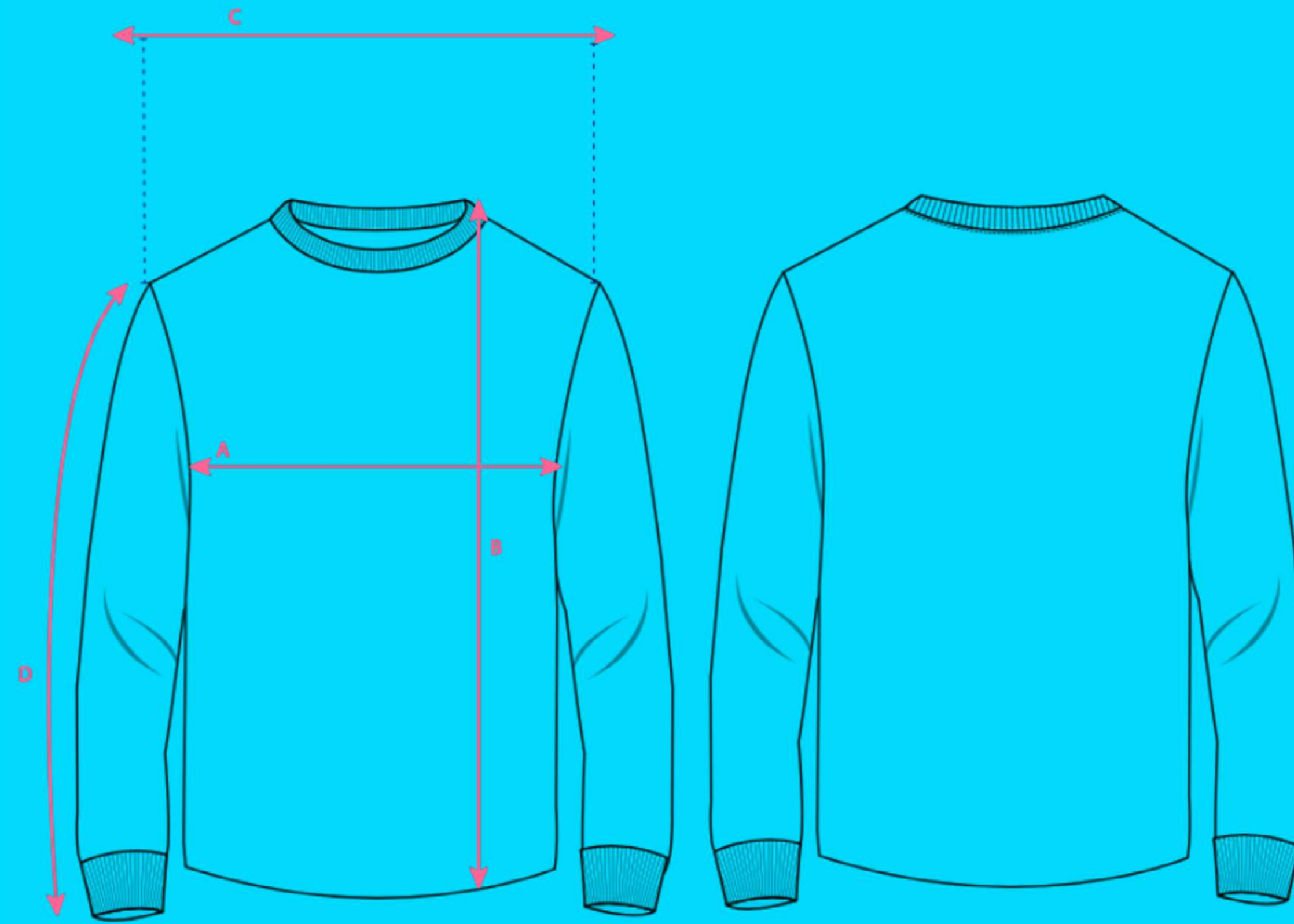
### CENTIMETERS

REF	MEASUREMENTS	10	12	14	16
A	<b>Front Chest:</b> The width at the chest, measure from underarm point to underarm point across the front.	42	45	48	51
B	<b>Front Length:</b> The vertical length of the garment, starting from the highest shoulder point, to the bottom of the hem.	60	64	67	73
C	<b>Across Shoulder:</b> The distance between the shoulder seams measured straight across the front.	34	36	39	42
D	<b>Sleeve length:</b> The total length from the shoulder seam to the start of the cuff.	16	17	18	19

# CHILDREN'S LONG SLEEVE

MR BEAST

## SIZING CHART



### INCHES

REF	MEASUREMENTS	10	12	14	16
A	<b>Front Chest:</b> The width at the chest, measure from underarm point to underarm point across the front.	16.5	17.7	18.9	20.1
B	<b>Front Length:</b> The vertical length of the garment, starting from the highest shoulder point, to the bottom of the hem.	23.6	25.2	26.4	28.7
C	<b>Across Shoulder:</b> The distance between the shoulder seams measured straight across the front.	13.4	14.2	15.4	16.5
D	<b>Sleeve length:</b> The total length from the shoulder seam to the start of the cuff.	21.7	22.4	23.6	24.8

### CENTIMETERS

REF	MEASUREMENTS	10	12	14	16
A	<b>Front Chest:</b> The width at the chest, measure from underarm point to underarm point across the front.	42	45	48	51
B	<b>Front Length:</b> The vertical length of the garment, starting from the highest shoulder point, to the bottom of the hem.	60	64	67	73
C	<b>Across Shoulder:</b> The distance between the shoulder seams measured straight across the front.	34	36	39	42
D	<b>Sleeve length:</b> The total length from the shoulder seam to the start of the cuff.	55	57	60	63